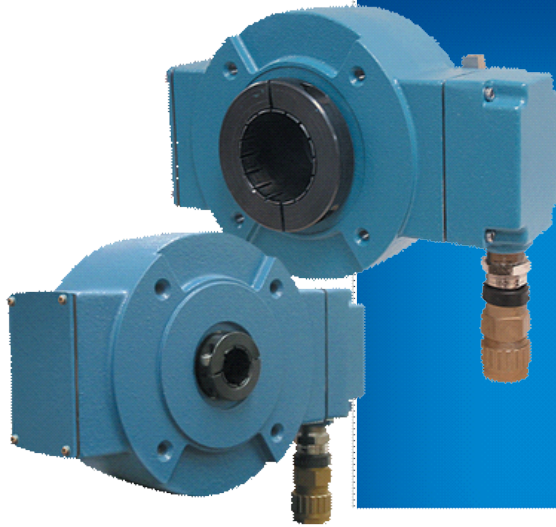


Avtron M6 Hazardous Area Encoders



**Explosion Protected ATEX
Zone 1, Magnetic Hollow Shaft
Mount Encoder, 1" to 1 1/8"**

16 lbs. of Tough Encoder for Hazardous Applications

- | Explosion protected
- | Flameproof/Increased Safety
 - | Heavy, Mill Duty
 - | Up to 1200 PPR
- | Immune to water, oil, dust, dirt, etc.
- | Withstands extreme shock and vibration
 - | Extra heavy-duty bearings
 - | Optional dual isolated outputs
- | Does not require intrinsic safety barriers
 - | ATEX/CENELEC certified for Zone 1 applications
- | Excellent for oil drilling and gas pipeline applications

M6

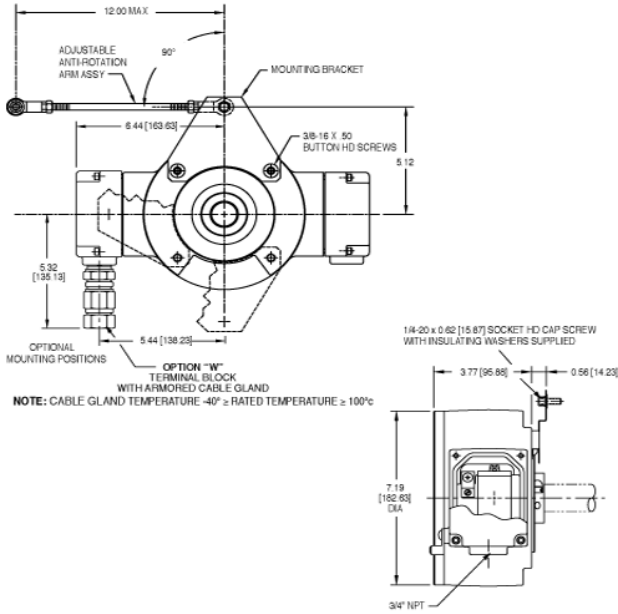
Avtron M6 explosion protected ATEX rated heavy mill duty rotary encoders are designed for direct mounting on motor or load shafts, from 1" to 1 1/8". Other models available include no-bearing units such as [XR5](#), [XR56](#) and [XR850](#), shafted models including [XR45](#) and [XR485](#).

No barrier or isolator is required-mount M6 directly in your ATEX application. For IECEx+ATEX applications an improved model [M6C](#) is available including complete protection from wiring errors and even longer cable drive capability.

For more information on keeping your rotary encoders working in oil and gas applications, visit our [oil and gas](#) blog.

Why buy an "explosion proof" encoder that requires protection from the slightest bump or raindrop? Pick an M6 explosion protected, heavy duty encoder!

OUTLINE DRAWING



MORE M6 ADVANTAGES

- ▮ Threaded rod torque arm for easy tethered mounting
- ▮ Highly resistant to electrical and magnetic motor and brake noise
- ▮ Second isolated output may be different PPR
- ▮ Available armored wire gland
- ▮ IP66 Enclosure
- ▮ 1 Year No-Hassle Warranty

M6 SPECIFICATIONS

Operating Power: 5-24 VDC; Current 120mA, no load

Output Format: A,A-, B,B-; Optional Marker Z,Z-

Frequency Range: 0 to 100 KHz

PPR: 240-1200

Speed:

- ▮ 5000 RPM Max. Std., 1" to 1 1/8" shaft

Temperature: 80C° to -40°C (-40°C optional, -20°C standard)

Chemical: Polyurethane enamel paint protects against salt spray, mild acids, and bases

Explosion Protection:

- ▮ ATEX 0539 II 2G
- ▮ Ex de IIC T4 (Tamb -20° to +80°C Standard, Tamb -40° to +80°C Optional)

Weight: 16 lbs./7kg.

Check out our website for more detailed specifications, drawings, andAll dimensions are in inches [millimeters].

installation instructions. www.avtronencoders.com

Specifications and features are subject to change without notice.

SELECTION GUIDE

Model	Bore Size	Mounting Style	Line Driver	Left & Right Output Range	Base PPR	Marker	Connector	Modifications
M6-	0- Non-Standard 4- 1" 5- 1 1/8" 6- 2" 7- 2 3/8"	S- End of Shaft	1- 5 to 24 VDC 2- 5 to 18 VDC 3- 12 to 24 VDC	X- None L- Low Range (Base PPR x 1/2) M- Medium Range (Base PPR x 1) H- High Range (Base PPR x 2)	48- 480 51- 512 60- 600	Z- Marker -- None	T- Conduit Box, Terminal Block, 3/4" NPT W- Conduit Box, Terminal Block and Wire Gland	000- None/No Torque Arm 001- Low Temp (-40°C) 003- Torque Arm B28390 005- Low Temp (-40°C) & Torque Arm

All dimensions are in inches [millimeters].
Specifications and features are subject to change without notice.

Nidec

**AVTRON
ENCODERS**

Nidec-Avtron Makes the Most Reliable Encoders in the World

8901 E. PLEASANT VALLEY ROAD • INDEPENDENCE, OHIO 44131-5508

TELEPHONE: (1) 216-642-1230 • FAX: (1) 216-642-6037

E-MAIL: tachs@nidec-avtron.com • WEB: www.avtronencoders.com

CE

All dimensions are in inches [millimeters].
Specifications and features are subject to change without notice.
EU-SMART™, SMARTSafe™, SMARTach II™, THIN-LINE™,
THIN-LINE II™, WIDE-GAP™, and BULLSEYE32™ are trademarks
of Nidec Avtron Automation. All other trademarks and registered
trademarks are the property of their respective owners.